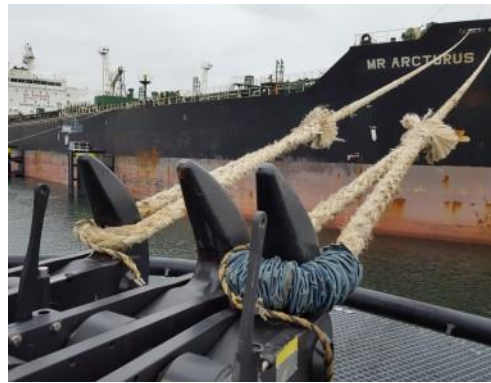


DOCKING & BERTH MONITORING SYSTEMS

Ports & Marine Terminals



VESSEL DOCKING AID SYSTEMS • MOORING LINE TENSION MONITORING
REMOTE HOOK RELEASE • ENVIRONMENTAL MONITORING
INTEGRATED BERTH MONITORING SYSTEMS



US Distributor: **Allison** *Equipment Group, Inc.*

Marine Terminal Monitoring Systems and Solar Power Packages

Straatman designs and manufactures a full range of monitoring systems for marine terminals. From vessel approach to environmental monitoring, Straatman provides proven equipment to meet our Customers specific requirements. Straatman monitoring capacities include vessel approach and docking aids, mooring line tensions, and environment conditions. Straatman also offers solar power packages for remote mooring requirements. Hazard area equipment certifications are also available.



Vessel Approach Displays

- Approach speed
- Approach distance
- Approach angle
- Safe area and hazardous area designed
- Local and remote control
- Manual and motorized rotation



Instrumented Quick Release Hooks

- Line tension monitoring
- Local display of line tension
- Local visual and audible alarms
- Local remote release
- Remote hook release
- Optional portable display of line tension data



Environmental Monitoring

- Wind direction and speed (anemometer)
- Temperature
- Barometric pressure
- Current speed and direction
- Tide level
- Wave Profile



Solar Power Packages

- Remote Power for Capstans and Hook Release
- Solar power: 1,060-Watt Peak
- Output: 24 VDC or 230 VAC
- Battery Backup
- Auxiliary options: Lighting, Nav Aids
- Ex Are Certifications

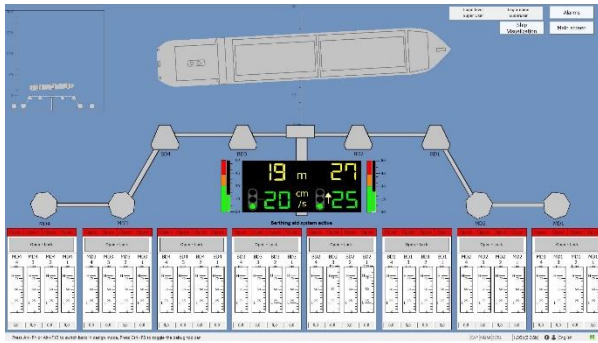
Application Software & Complete Monitoring Systems

Each dock and marine terminal are different. Straatman monitoring systems are custom tailored to meet the specific requirements of our Customers facility. Standard application software packages are configured to match the plan view of the marine terminal, incorporate the selected monitoring capabilities and provide real time data within pre-defined parameters. Safe and unsafe condition setpoints and alarms are provided. All real time data is logged and is easily accessed for review.



Berthing Aid Systems-Vessel Approach

Straatman Berthing Aid Systems (BAS) provide real time information on vessel approach and docking maneuvers. This information is displayed on the dock and is visible to the ships Pilot using a Large digital Display (LDD). This information is also displayed and recorded on the BAS computer system located in the terminal Control Room.



- Approach speed
- Approach distance
- Approach angle
- Weather Conditions
- Marine Conditions
- Vessel Surge



Mooring & Berth Monitoring Systems

Straatman Mooring Line Tension and Berth Monitoring Systems are designed to meet the Customers specific marine terminal requirements. Mooring Monitoring Systems provide real time information and alerts for unsafe conditions; Berth Monitoring systems provide information on vessel approach, mooring, and environmental conditions.



- Vessel Approach
- Mooring Line Tensions
- Weather Conditions
- Marine Conditions
- Remote Hook Release Capabilities
- Vessel Surge

Customers

Buckeye Partners
Chevron
Citgo
ExxonMobile
Flint Hills Resources
Hudson Engineering and Construction
Marathon Oil
Melones Oil
Motiva
McDermott
Nustar
Orion Marine Construction
Phillips 66
Plains All American
Savage Services
Sunoco
Tesoro

About Allison

Allison Equipment Group is a US Distributor and Services provider for the Marine and Offshore Oil and Gas Industries. Established in 1999, Allison has brought together a select group of global Suppliers, each highly respected companies with established track records and extensive project resumes. Allison provides equipment for a broad range of applications that include Marine Terminal Mooring, Vessel Access and Vessel Loading/Unloading, Berth Monitoring Systems, Marine Navigation, Offshore Vessel Towing, Offshore Vessel Positioning and Berthing, and Oil Spill Response.

Allison *Equipment Group, Inc.*

11000 Richmond Ave., Suite 566 • Houston, Texas 77042
Office: 713-524-4323 • Email: sales@allison-usa.com
Website: www.allison-usa.com